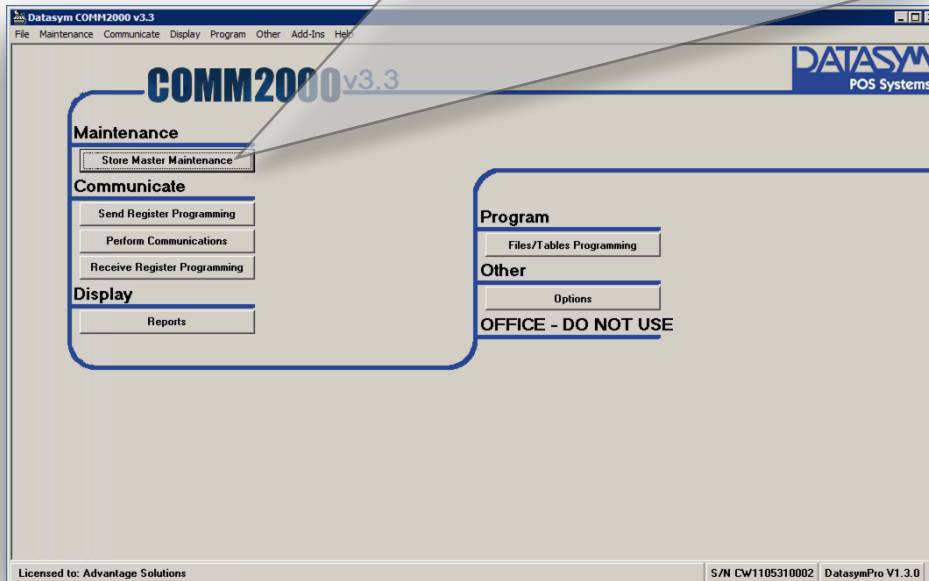


How To Change The IP address Of your Register In Comm2000

1

Open Comm2000 and click on Store Master Maintenance

Store Master Maintenance



2

Select the store number that the register you are wanting to change resides

Store No. 0099

The screenshot shows the 'Store Maintenance' dialog box. The 'Store No.' field is set to 0099. The 'Register List' shows a single entry: '01 DatasmPro 192.168.0.10'. The 'Add-->' button is highlighted.

Register IP or Name	Register Number	Register Type
192.168.0.101	02	DatasmPro

3

Double click on the register in your register list and it will disappear



01 DatasymPro 192.168.0.10

Store Maintenance

Company No. 00
Store No. 0099
Description Training
Password
COM Port TCP/IP ☒ xr650 network
Network Conn Local Area Connection 3
Port 2601
Test Connection
Create Connection
Conn Type
☐ local
☒ local(adv)
☐ remote
Register IP or Name 192.168.0.101
Register Number 02
Register Type DatasymPro
Add-->
Remove
Save Exit Delete

You will notice the register you double clicked on is now gone from your list

Store Maintenance

Company No. 00
Store No. 0099
Description Training
Password
COM Port TCP/IP ☒ xr650 network
Network Conn Local Area Connection 3
Port 2601
Test Connection
Create Connection
Conn Type
☐ local
☒ local(adv)
☐ remote
Register IP or Name 192.168.0.101
Register Number 02
Register Type DatasymPro
Add-->
Remove
Save Exit Delete

4

Click in the Register IP or Name box and type in the correct IP address

Store Maintenance

Company No. 00

Store No. 0099

Description Training

Password

COM Port TCP/IP ☒ xr650 network

Network Conn Local Area Connection 3

Port 2601

Register IP or Name 192.168.0.101

Register Number 02

Register Type DatasymPro

Add->

Remove

Test Connection

Create Connection

Conn Type

☐ local

☒ local(adv)

☐ remote

Save Exit Delete

5

Now we need to click on the Register Number drop down and select the register number we removed in the steps above.

**If you removed register number 1, your will need to scroll up to see the number 1*

Register Number

02

01

02

03

04

05

06

07

08

Type Pro

Add->

6

Click Add

Add-->

You will see the register show up in the Register List with the correct IP address

Store Maintenance

Company No. 00
 Store No. 0099
 Description Training
 Password
 COM Port TCP/IP ☒ xr650 network
 Network Conn Local Area Connection 3
 Port 2601
 Test Connection
 Create Connection
 Conn Type
☐ local
☒ local(adv)
☐ remote

Register IP or Name 192.168.0.101
 Register Number 02
 Register Type DatasymPro
 Add-->

Register List

01	DatasymPro	192.168.0.101
----	------------	---------------

Remove

Save Exit Delete

7

Click Save

Save

Exit

8

Click Exit

9

You can now perform your daily communications.

Perform Communications

**If you are still experiencing issues, please contact Intermountain Solutions at (801) 399-9200*